



Map-A7R

Map-A7R Mapping Camera Featuring Full-Frame Exmor CMOS Sensor 42 Mega Pixels, Small Size and Light Weight is Specially Designed for High-Quality Aerial Mapping and Survey.

 **FOXTECH**

Foxtech Trade Co.,Ltd.

Map-A7R

Map-A7R Mapping Camera Featuring Full-Frame

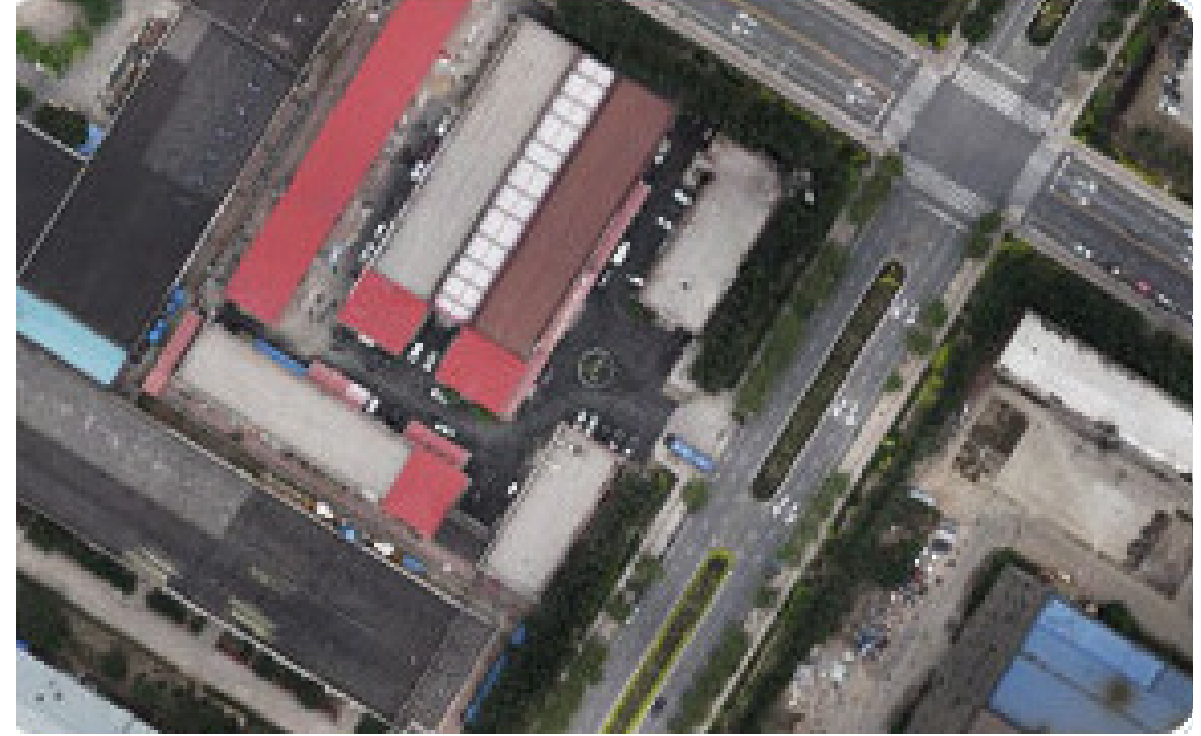
Advance Full-Frame Mapping Camera

Product	Foxttech Map-A7R Advanced Full-Frame Mapping Camera with 2-axis Gimbal
Pixels and Size	42 mega pixels: 4.7 μ m.
Temperature	-5 deg C. to 50 deg C.
Minimum Exposure Time	1.5s
Sensor Size	35.9 * 24 mm
Hot Shoes for PPK	Support
Image Size (pixels)	7952 * 5304
Shutter Speed	30-1/8000
Size	96 * 75 * 39.5 mm
Lens	35mm./40mm./56mm.
Power	9-28V
Weight	190g(Without Lens)/380g(with 2-axis Gimbal and 40mm Lens)
Parameter Setting	Button/USB
Data Reading	USB/SD Card (SD card 256G)

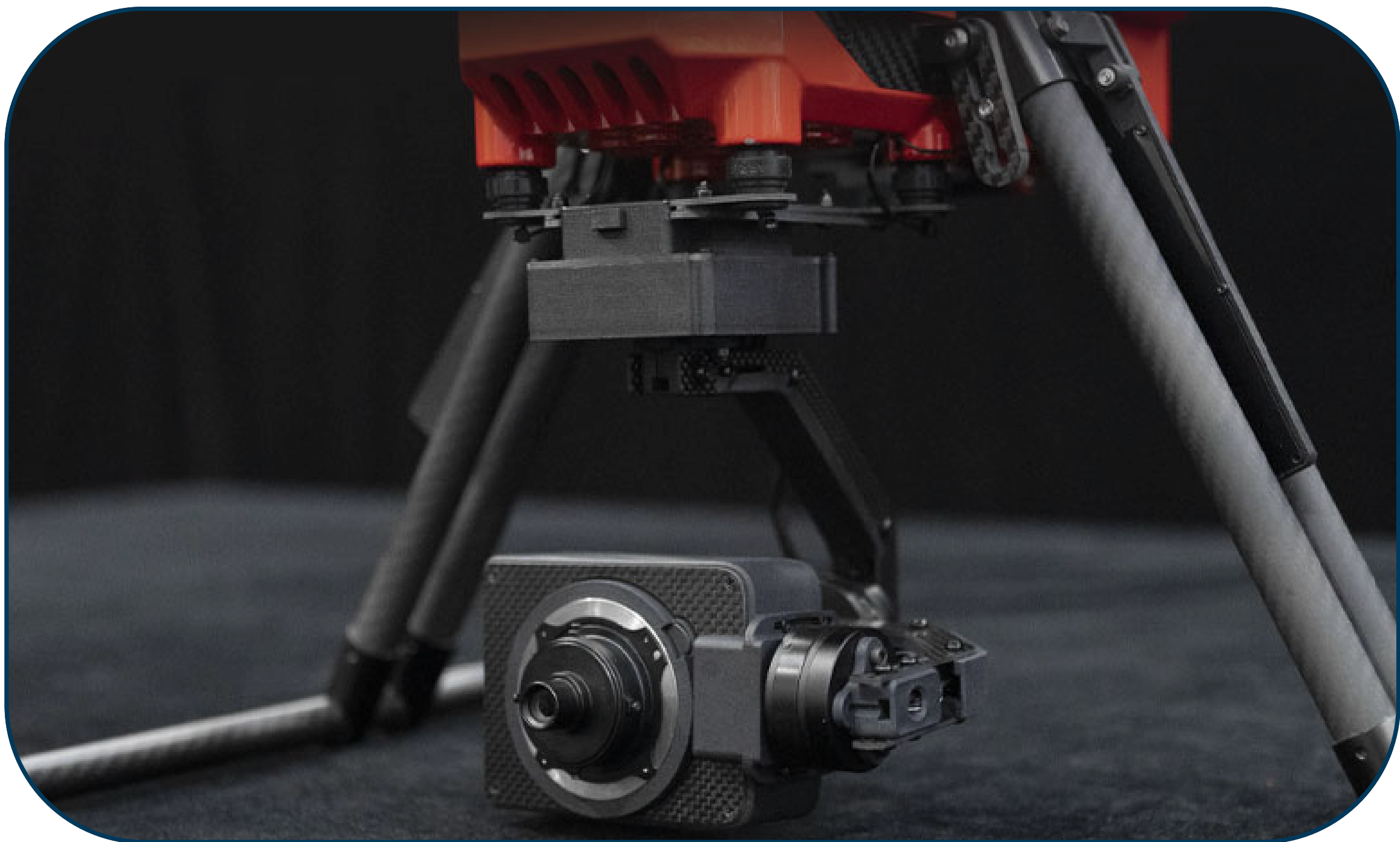


Map-A7R

Map-A7R has hot shoe feedback that can trigger the PPK module such as Emlid Reach PPK for precision mapping.



2-axis Gimbal Version, Greatly Improves Camera Stability During the Flight.



1. Screen
2. Menu
3. Save
4. Shutter
5. Setting
6. SD Card
7. HDMI
8. USB